

STILEX

IMPACT

®

LUXURY VINYL TILE

CARPET TOUCH®



DRY BACK LVT

MEDIUM TO HEAVY FOOT TRAFFIC | SUPERIOR STAIN & SCRATCH RESISTANCE

2.0 mm | 24" x 24" | 16 pc / box | 64 sq.ft / box



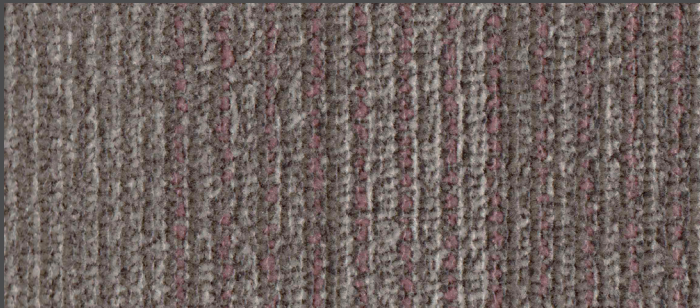
IMP - CTH - 01

White Sands



IMP - CTH - 02

Wheat Husk



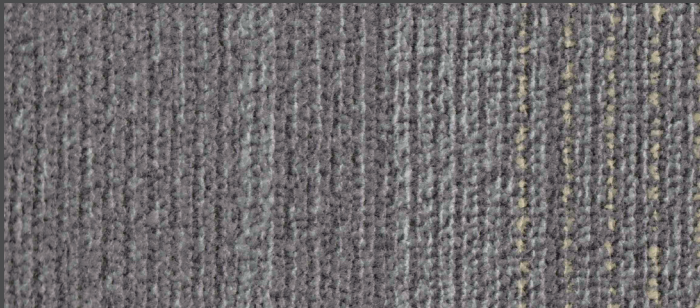
IMP - CTH - 03

Coffee Blend



IMP - CTH - 04

Forest Brown



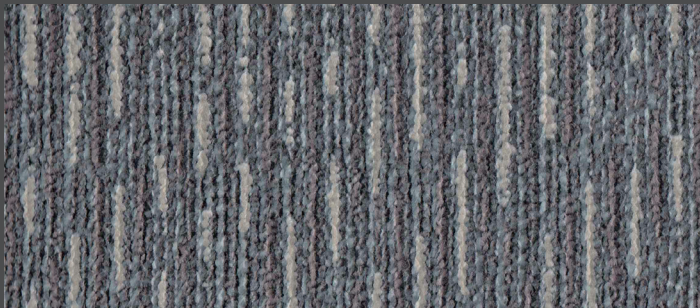
IMP - CTH - 05

Taupe Grey



IMP - CTH - 06

Charcoal Grey



IMP - CTH - 07

Blue Grey Symphony



IMP - CTH - 08

Ocean Deep



Easy
Installation



Superior Scratch
& Stain Resistant



Zero
Maintenance



FEATURES & BENEFITS



Superior Scratch
& Stain Resistant



Zero
Maintenance



Easy
Cleaning



Carpet
Look & Feel



Medium to Heavy
Foot Traffic



Easy
Installation

APPLICATIONS



Offices



Residential



Retail



Hospitality

SPECIFICATION

Luxury Vinyl Tiles for light commercial and heavy commercial
PUR Polyurethane reinforcement | Product Standard: ISO 10582

CERTIFICATION & CLASSIFICATION	STANDARD	IMPACT CARPET TOUCH [®]
TYPE OF FLOOR COVERING	ISO 10582	LUXURY VINYL TILE
CE CERTIFICATION	EN 14041	Yes
CLASSIFICATION	EN ISO 10874	Commercial : 31 Heavy Commercial : 34

TECHNICAL CHARACTERISTICS	STANDARDS	IMPACT CARPET TOUCH [®]
TOTAL THICKNESS	EN ISO 2436 (EN 428)	2.0 MM
WEAR LAYER THICKNESS	EN ISO 24340 (EN 429)	0.30 MM
SURFACE TREATMENT	UV TREATED	PUR
TOTAL WEIGHT	EN ISO 23997 (EN 430)	3300 g/m ²
WEAR LAYER BINDER CONTENT	ISO 10582	TYPE I
FORM OF DELIVERY	EN ISO 24342 (EN 427) Tiles box	24" X 24" / 16 Tiles / box = 64 sq.ft

TECHNICAL PERFORMANCES	STANDARDS	IMPACT CARPET TOUCH [®]
DIMENSIONAL STABILITY	EN ISO 23999 (EN 434)	≤ 0.25%
REACTION TO FIRE	EN 13501 - 1	Bfl- S1 glued over A2fl substrate (concrete)
RESIDUAL INDENTATION	EN ISO 24343-1 (EN 433)	Required value : ≤ 0.10mm Average measured value : 0.03mm
FURNITURE LEG	EN 424	No damage
CASTOR CHAIR	EN ISO 4918 (EN 425)	No damage
CURL RESULTANT TO HEAT	EN ISO 23999 (434)	≤ 2mm
THERMAL RESISTANCE	EN ISO 10456	0.07M2 K/W
LIGHT FASTNESS	EN ISO 105 - B02	PASS
RESISTANCE TO CHEMICALS	EN ISO 26987 (EN423)	Good resistance
SLIP RESISTANCE	DIN51130 EN 13893	R9 PASS

© All contents of this Technical Data Sheet are of the copyright of Responsive Industries Limited. Any duplication in any form without prior permission is strictly prohibited. The above data is also valid at the time of print. For more details regarding the technical specifications, handling and installation, please contact Responsive Industries Limited.

STANDARDS

ISO 18001
ISO 14001
ISO 9001



EN 14041



VOC Emission



Fire

31



Electrical

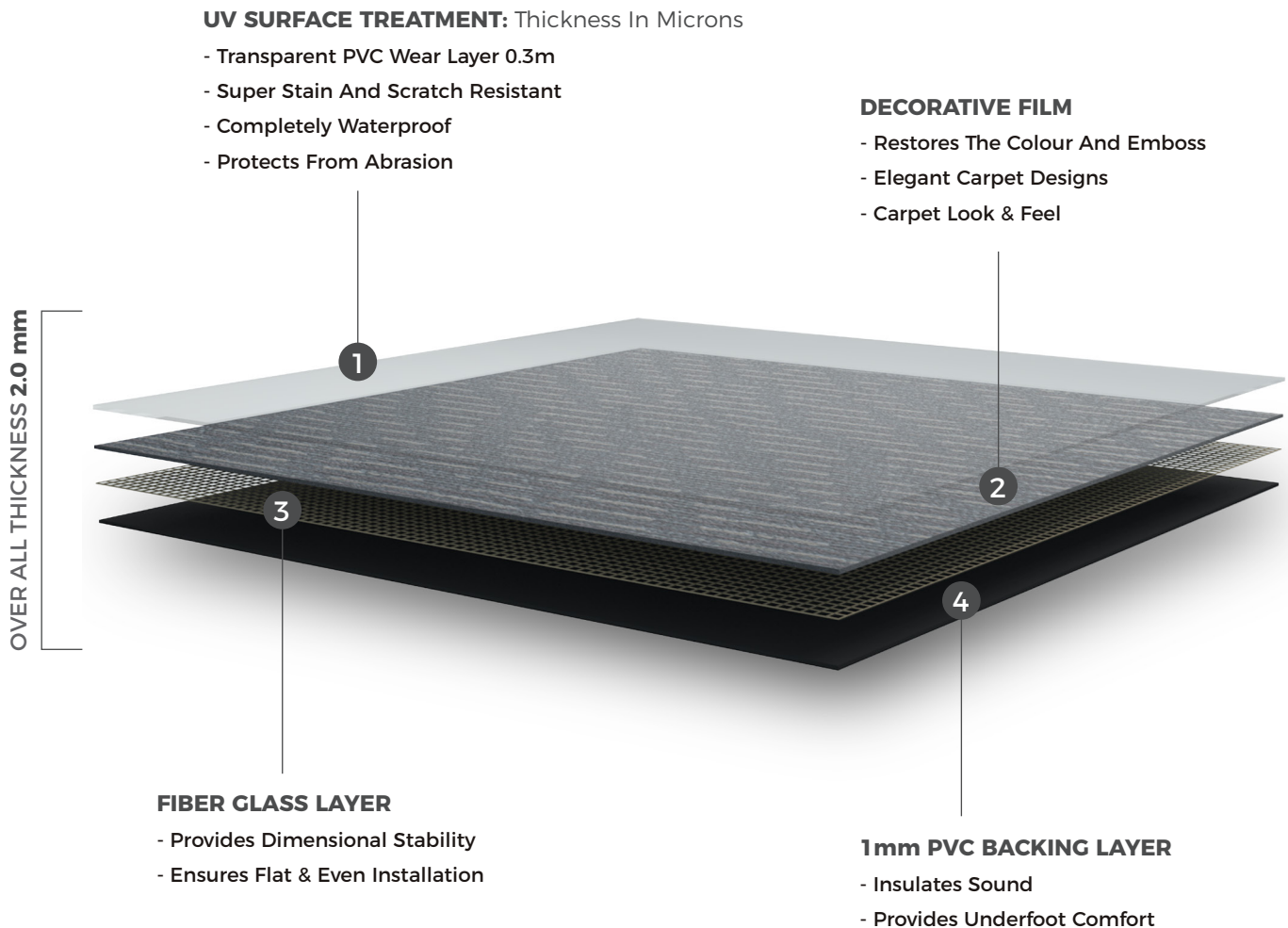


Slip

34



AN ENGINEERING MARVEL



REACH US